



Title V (HSI) Grant Proposal Update:
Background, Process, Plan

Santa Rosa Junior College

Spring 2019



Background

- 2014, SRJC gained the designation of a Hispanic-Serving Institution (HSI) from the US Department of Education.
- 2014, we secured a five-year, \$2.65 million Title V (HSI) grant.
- That grant, META4, is set to expire on September 30, 2019 and we have an opportunity to apply for a new five-year grant.



Background²

- Request for proposal (RFP)
- Submission deadline
- Notification timeframe
- Grant cycle, October 1, 2019 through September 30, 2024



Process

Campus Forums (February 5, February 6)

- Comprehensive Data Overview, KC Greaney
- Focused Discussions
- Discussion and Prioritization Worksheets

Online Survey

- February 11 through February 20

Follow up meeting with targeted areas

- March, April

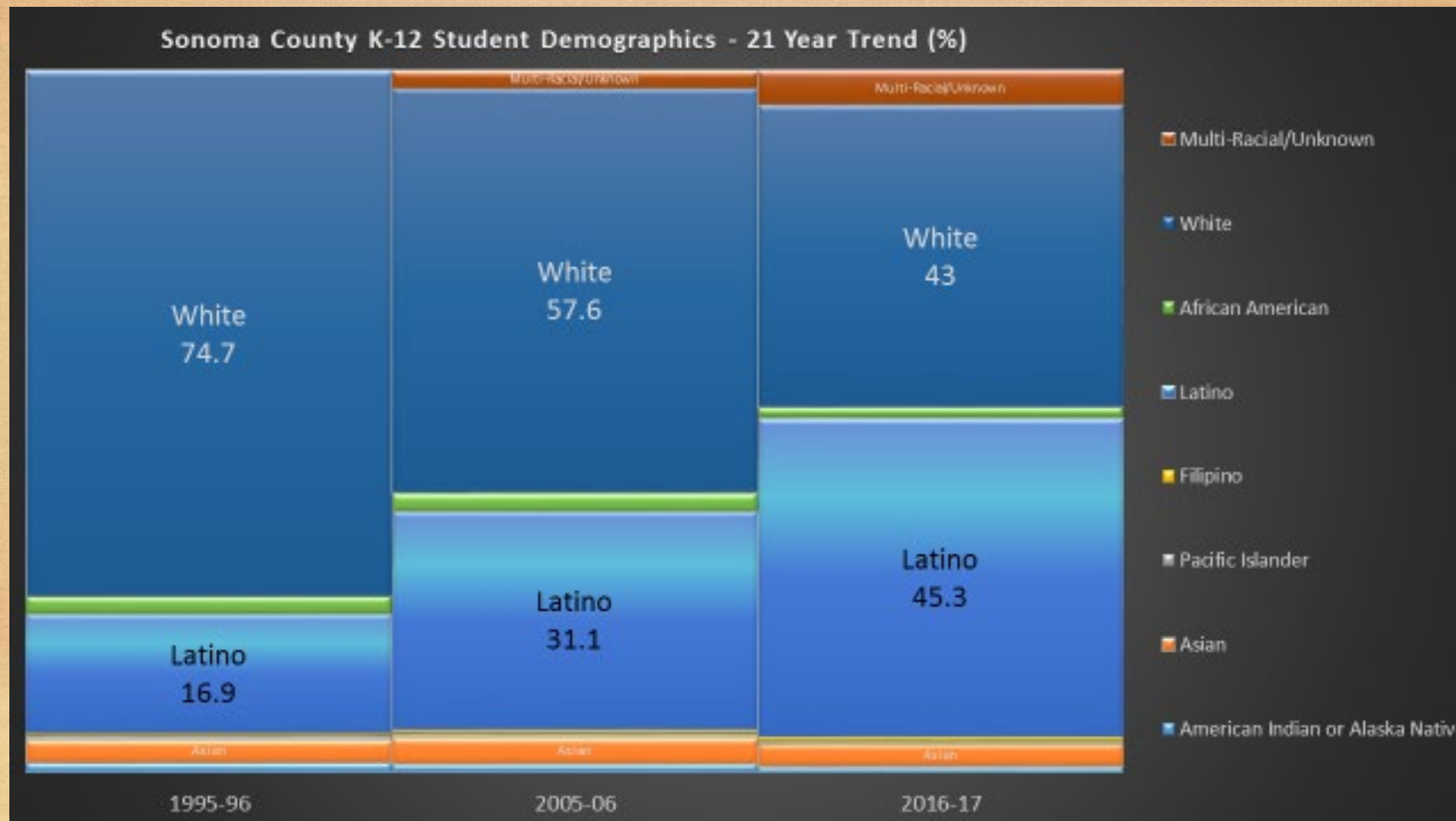


Discussion Facilitators

- Barbara Barajas, Counseling
- Carlos Valencia, College Skills/Tutorial
- Carmen Castillo, English
- Guillermo Garcia, Counseling
- Laura Larque, Social Sciences
- Luz Navarette, ESL
- Salvador Rico, Math

Demographics – Sonoma County K-12 Demographics

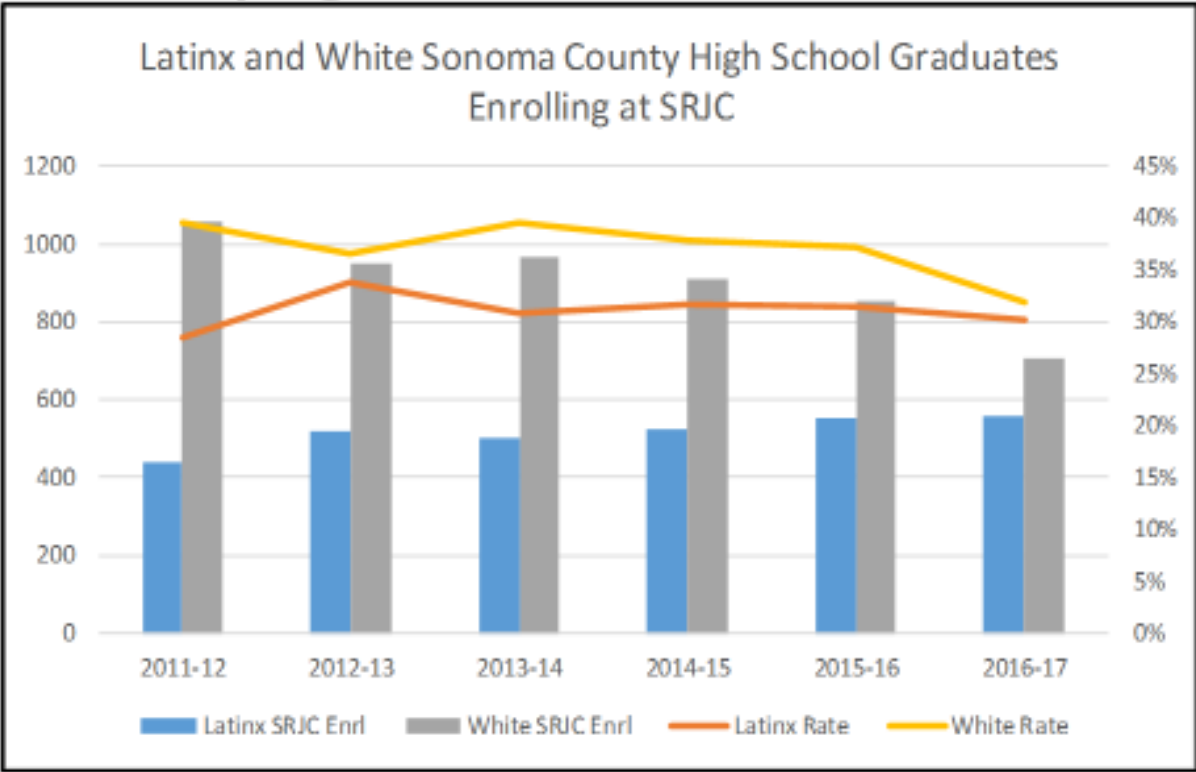
Latinx student populations continue to increase and comprise higher percentages of overall student populations.



Demographics – Sonoma County High School Transition to SRJC

Latinx student populations continue to increase and comprise higher percentages of overall student populations.

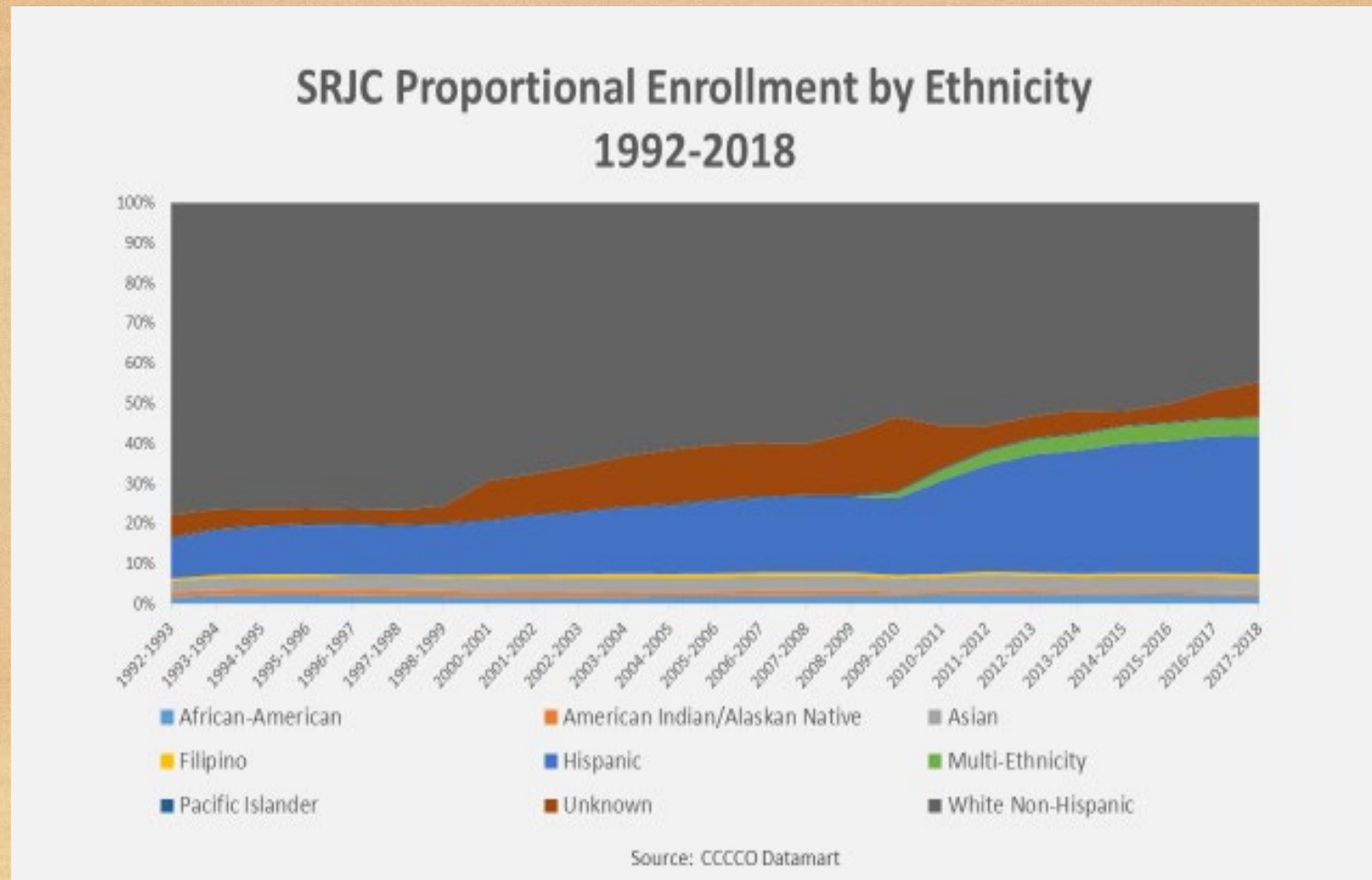
Sonoma County High School Transition to SRJC



Source: California Department of Education and SIS

Demographics – SRJC Proportional Enrollment by Ethnicity

Latinx student populations continue to increase and comprise higher percentages of overall student populations.

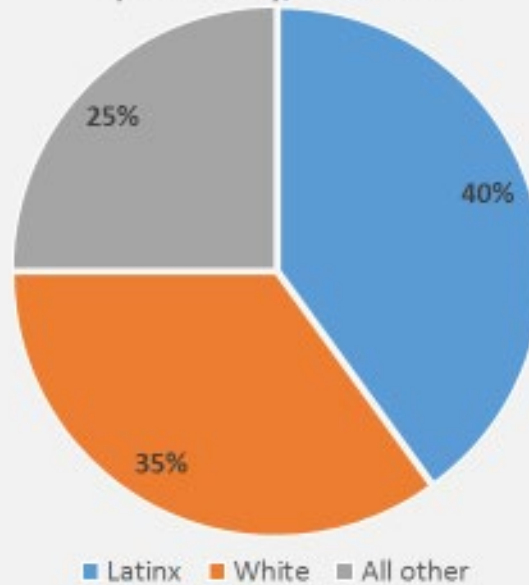


Demographics – First Time (New) Students at SRJC

Latinx student populations continue to increase and comprise higher percentages of overall student populations.

First Time (New) Students at SRJC

By Ethnicity, Fall 2017



Source: CCCC Datamart

Demographics – Proposed Activities

Latinx student populations continue to increase and comprise higher percentages of overall student populations.

Proposed Activities	Points of Contact	Department/ Office
HSI Coordination with the SRJC Outreach Team: Promotional Materials, Presentations, Meetings, Videos, Social Media, Mentoring	Michelle Poggi	Student Outreach
High School, Middle School Campus Resource Tours	Michelle Poggi	Student Outreach
AB 705 Communities of Practice: Math, English, ESL, College Skills, beyond	Robert Holcomb, Victor Tam	Language Arts and Academic Foundations, Science, Technology, Engineering, Math
Campus-wide Latinx <i>Book Club</i> Initiative for College employees, Library Dept.	Nancy Persons	Library and Information Resources
Conference Travel and Presentations: -HACU, -SCCHSI -AHSIE	Juan Arias	Title V (HSI)
Petaluma Campus -Culturally Relevant Community of Practice -English Acceleration Summer Community of Practice -Develop a mentorship program for potential applicants	Catherine Williams	Instruction and Enrollment Management, Petaluma Campus
Student Psychological Services -Training and Personnel geared toward Latinx Students	Bert Epstein	Student Psychological Services
Data-Driven HSI Summits Open to SRJC Campus Community: PDA Days, Latinx Heritage Month, etc.	KC Greaney	Institutional Research
Theoretical Framework, <i>ISSC Pillars of Success</i> , Student Success Redefined, Darla Cooper	Matthew Long, Li Collier, Robert Holcomb	ISSC, Guided Pathways

Identified Disparity – Socioeconomic Status

Latinx students on average come from lower SES backgrounds than White students do.

SRJC Credit Student Characteristics by Ethnicity, Fall 2017

	White	Latinx	Difference
First Generation	18%	52%	34%
Full Time (15+ units)	5%	3%	2%
Full Time (12+ units)	15%	17%	2%
Goal of Transfer (with or without Associate degree)	44%	52%	8%
Goal of Associate degree only	13%	14%	1%
Goal of CTE	21%	14%	7%
Received any Financial Aid	36%	55%	19%
Received Pell	7%	13%	6%
AB540	0.2%	3%	3%
Promise (BOG)	14%	24%	10%
N	10,559	7,145	

Source: SIS

Identified Disparity – Socioeconomic Status Proposed Activities

Latinx students on average come from lower SES backgrounds than White students do.

Proposed Activities	Points of Contact	Department/ Office
Textbook Loan Initiative, Library	Nancy Persons	Library and Information Resources
Financial Aid	Jana Cox	Student Financial Services
Internships Job Fair	Brad Davis	Workforce Development
STEM Student Internship at local firms & research entities (coordinator and financial support for students); focus on CTE as needed	Victor Tam	Science, Technology, Engineering, Math
Service Learning/Internships: Los Cien La Luz Corazón Healdsburg CAP Sonoma	Hector Delgado	Southwest Center, Latino Faculty Staff Association

Identified Disparity – Academically Underprepared

Latinx students come to SRJC academically underprepared in key academic disciplines.

Sonoma County Public School Students

K-12, 2016

Race/Ethnicity	% Meeting or Exceeding Grade Level Standards in <u>Mathematics</u> (CAASPP)	% Meeting or Exceeding Grade Level Standards in <u>Reading</u> (CAASPP)
White	49%	63%
Latinx	23%	34%
	26% Gap	29% Gap

High School, 2017-2018

Race/Ethnicity	Cohort Students	Cohort Graduation Rate	Graduates Meeting UC/CSU Requirements
White	2,539	82%	42%
Latinx	2,385	80%	30%
		2% Gap	12% Gap

Source: California Department of Education

Identified Disparity – Academically Underprepared Proposed Activities

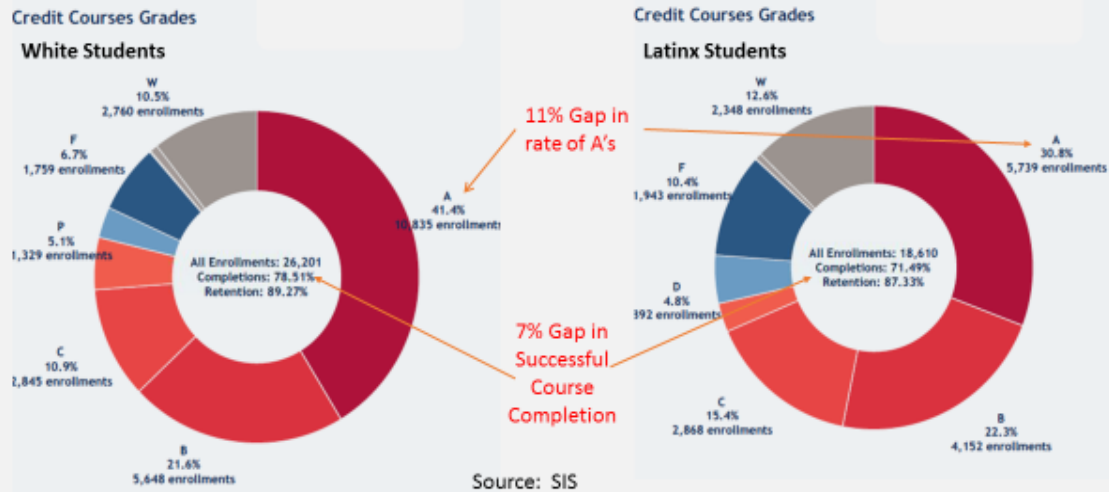
Latinx students come to SRJC academically underprepared in key academic disciplines.

Proposed Activities	Points of Contact	Department/ Office
HSI Dual Enrollment Offerings: Identity-Themed Courses, Embedded Learning Support, Faculty Inquiry Groups	Jane Saldaña-Talley, Pedro Avila	Academic Affairs, Student Services
HSI High School College Experience Program, High School Students Shadow College Students	Michelle Poggi	Student Outreach
Petaluma Campus Develop a Culturally Relevant Freshman Year Experience Program	Catherine Williams	Instruction and Enrollment Management, Petaluma Campus
Partner with <i>Zero Week</i> Initiative Transfer Bootcamp, HSI Summer Academies: STEM Academies (CHEM, CS, BIO, MATH), Language Arts, CTE, etc.	Michelle Vidaurri	Assessment Services Student Success Technology
Outreach coordination with MESA – recruit Latinx students to STEM; establish another form of MESA Schools program?	Victor Tam	Science, Technology, Engineering, Math
WOLM Discussion Sessions, Latinx Facilitators and Perspective	Roam Romagnoli, Carmen Castillo	English

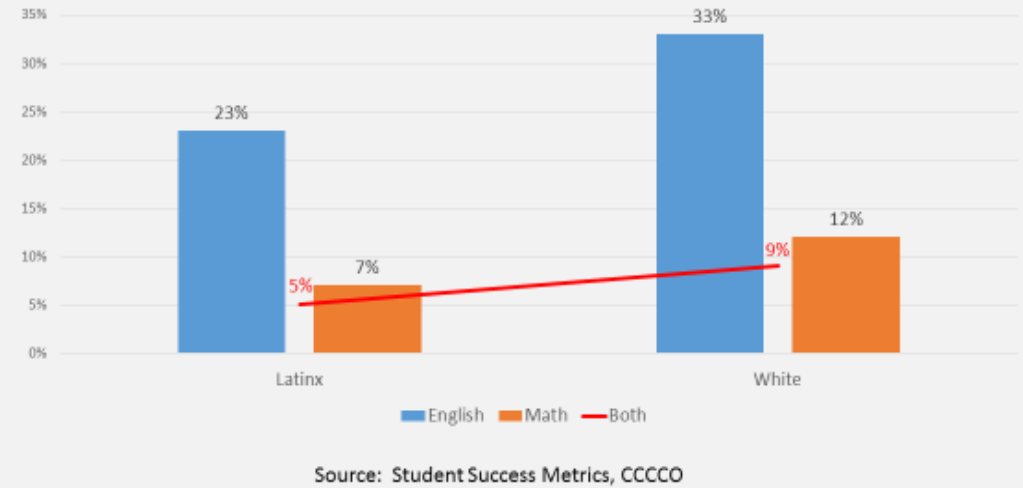
Identified Disparity – Lower Course Level Achievement

Latinx students show lower course level achievement.

SRJC Student Successful Course Completion by Ethnicity, Fall 2017



Successful Completion of Transfer Math and English in the First Year (New Students)



Identified Disparity – Lower Course Level Achievement Proposed Activities

Latinx students show lower course level achievement.

Proposed Activities	Points of Contact	Department/ Office
HSI Designated Course Sections with Embedded Support and Library Partnership	Robert Holcomb	Language Arts and Academic Foundations
Academic Workshops: Tutorial Center Writing Center Math Lab ESL Center Distance Ed.	Amy Flores Lauren Servais Luz Navarrete Lisa Beach	Tutorial Center English English as a Second Language Distance Education
PALS Program, Tutor Training, Faculty/Tutor Engagement	Lauren Servais	English

Identified Disparity – Lower Levels of Completion of Educational Goals

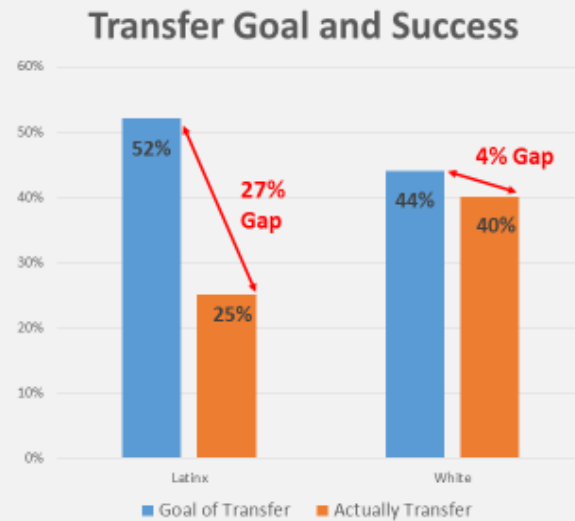
Latinx students show lower levels of completion of educational goals.

How many (credit) students have the goal of transfer (with or without an Associate degree)?

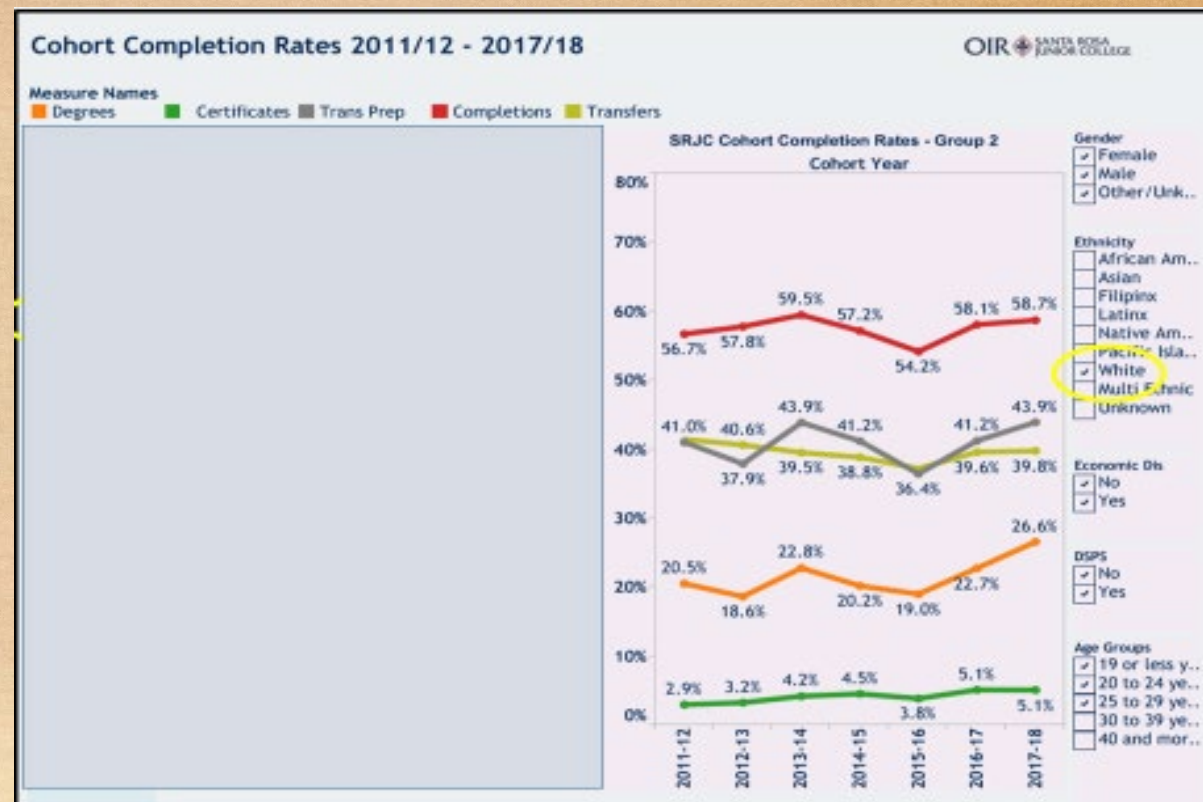
- 52% of SRJC Latinx students
- 44% of SRJC White students

How many *actually transfer*, within 6 years?

- 25% of Latinx students
- 40% of White students



Source: SIS and the Student Success Scorecard



Identified Disparity – Lower Levels of Completion of Educational Goals

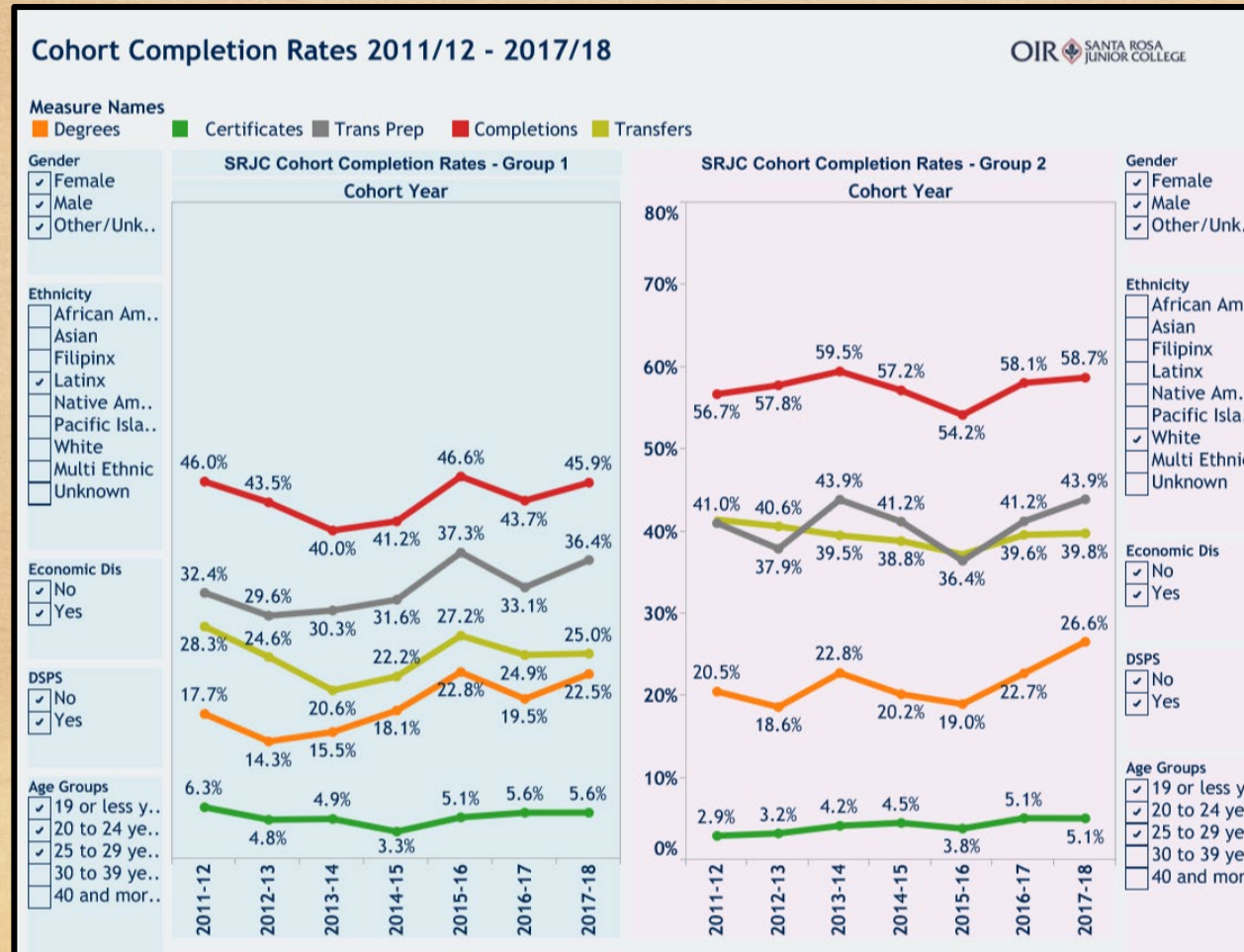
Proposed Activities

Latinx students show lower levels of completion of educational goals.

Proposed Activities	Points of Contact	Department/ Office
STEM Success Center – focused workshops, career prep, tutoring, skills (coordinator)	Victor Tam	Science, Technology, Engineering, Math
Embedded Student Success Coaches	Matthew Long	Student Services, Petaluma Campus
Pathways to credit coursework from SRJC Southwest Center Educational Programs	Robert Holcomb	Language Arts and Academic Foundations
Welcome Center (Plover)	Li Collier	Counseling and Student Success
ESL Moving on up Conference	Luz Navarrete	English as a Second Language
Strengthen South County ESL Credit Pathway Initiative (Petaluma Campus)	Catherine Williams	Instruction and Enrollment Management, Petaluma Campus

Identified Disparity – Less Likely to Transfer

Latinx students who complete transfer requirements are still less likely to transfer.



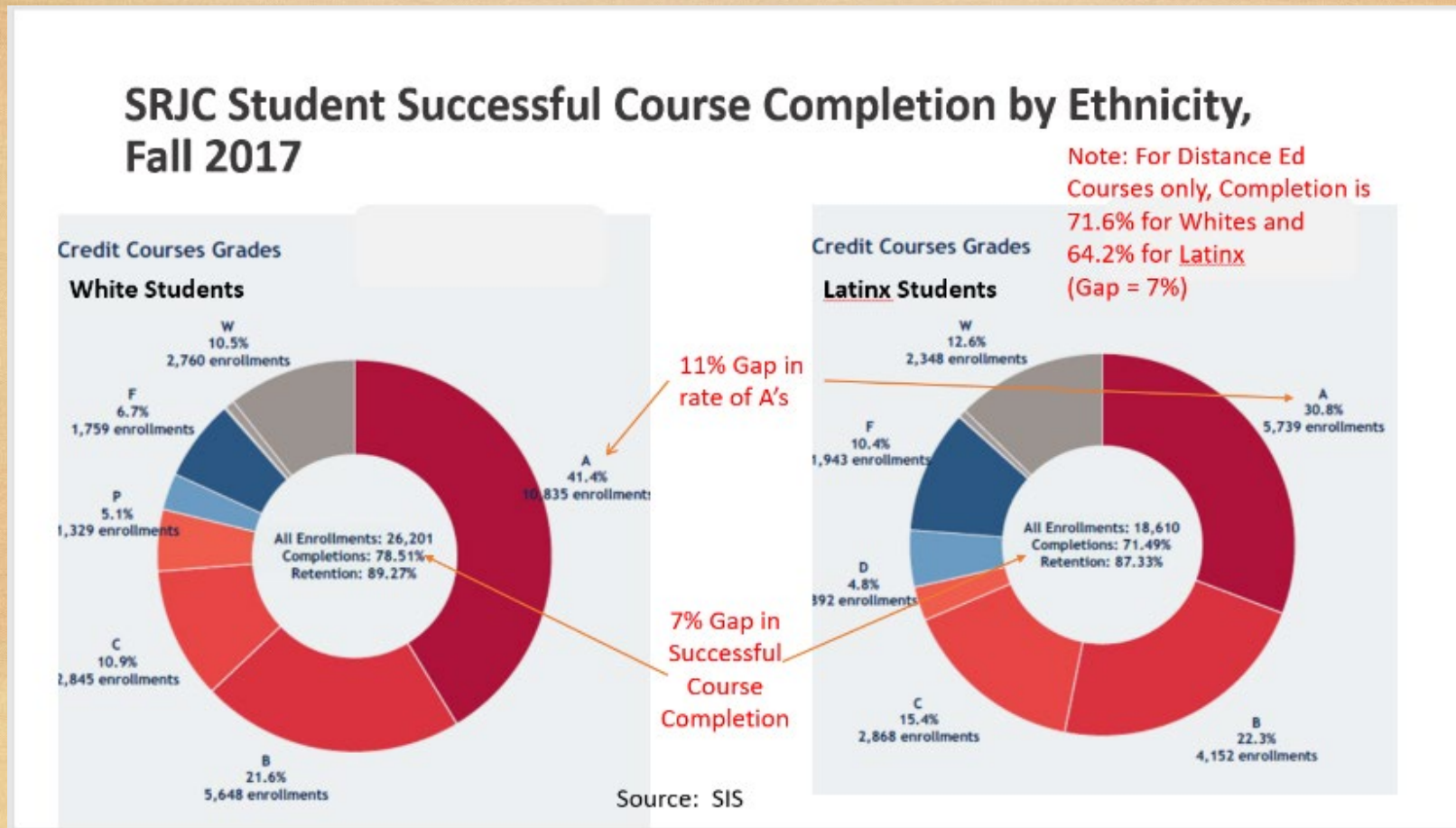
Identified Disparity – Less Likely to Transfer Proposed Activities

Latinx students who complete transfer requirements are still less likely to transfer.

Proposed Activities	Points of Contact	Department/ Office
HSI Designated Course Section(s) <i>Counseling 80 Understanding Transfer</i>	Li Collier	Counseling and Student Success
Transfer Day, Targeted University Rep. Workshops	Amy Merkel	Transfer Center
HSI University Tours, local region and beyond	Amy Merkel	Transfer Center
Strengthen HSI Partnership with Sonoma State: -Puertas Project - <i>Tu Eres la Diferencia</i> Conference -SRJC Transfer Center Collaborations	Juan Arias	Title V (HSI)
Mentorship Initiative with LFSA	Hector Delgado	Southwest Center, Latino Faculty Staff Association
Networking Events with Current Latinx Students and JC Alumni	Juan Arias Malena Hernandez	Title V (HSI) Intercultural Center

Identified Disparity – Distance Education

Latinx students enroll in distance education courses at higher rates than other student populations do, but course completion rates of distance education courses are lower among Latinx students than they are among other student populations.



Identified Disparity – Distance Education Proposed Activities

Latinx students enroll in distance education courses at higher rates than other student populations do, but course completion rates of distance education courses are lower among Latinx students than they are among other student populations.

Proposed Activities	Points of Contact	Department/ Office
Distance Education Part-time multimedia specialist to help instructors create videos; includes training, filming, and post-production,	Lisa Beach	Distance Education Program
Distance Education video engagement software	Lisa Beach	Distance Education Program
Distance Education audio/video discussion enhancement software	Lisa Beach	Distance Education Program

Student Assets and Opportunities

Latinx students are more likely to achieve academically within institutions that celebrate their cultural heritages and provide learning opportunities that reflect their lives and experiences.

Educational Research: Pedro Noguera, Laura Rendón, Estela Bensimon, Alicia Dowd, Angela Valenzuela, John Dewey, William Heard Kilpatrick, Steven Krashen, Paolo Freire, among many others.

Proposed Activities	Points of Contact	Department/ Office
Family Engagement Programming <i>Noche de Familia</i> , Campus Festivals, Parental Involvement	Laura Larqué Sami Lange Enedina Vera, Beatriz Camargo	Social Sciences World Languages HEP
HSI Coordination with Local Agencies, such as -Latino Service Providers -Hispanic Chamber -Los Cien -La Luz -10,000 Degrees -Corazón Healdsburg -KBBF -Migrant Education -Humanidad -NAMI -County of Sonoma -SSU -Raíces Colectivas -North Bay Organizing -John Jordan Foundation -On the Verge	Hector Delgado	Southwest Center, Latino Faculty Staff Association
Petaluma Campus <i>One Book</i> Initiative	Catherine Williams	Instruction and Enrollment Management, Petaluma Campus
HSI Arts & Lectures Programming	Laura Larqué Sami Lange Malena Hernanadez	Social Sciences World Languages Intercultural Center



Final Thoughts

- Working with Hanover Research, grant writing team from the previous grant
- Highly competitive grant year
- Solid process, extensive input, strategic themes
- Strong proposal and opportunity



Discussion
