

Institutional Effectiveness Partnership Initiative (IEPI)  
2016/17  
Indicator Framework and Goal Setting Process

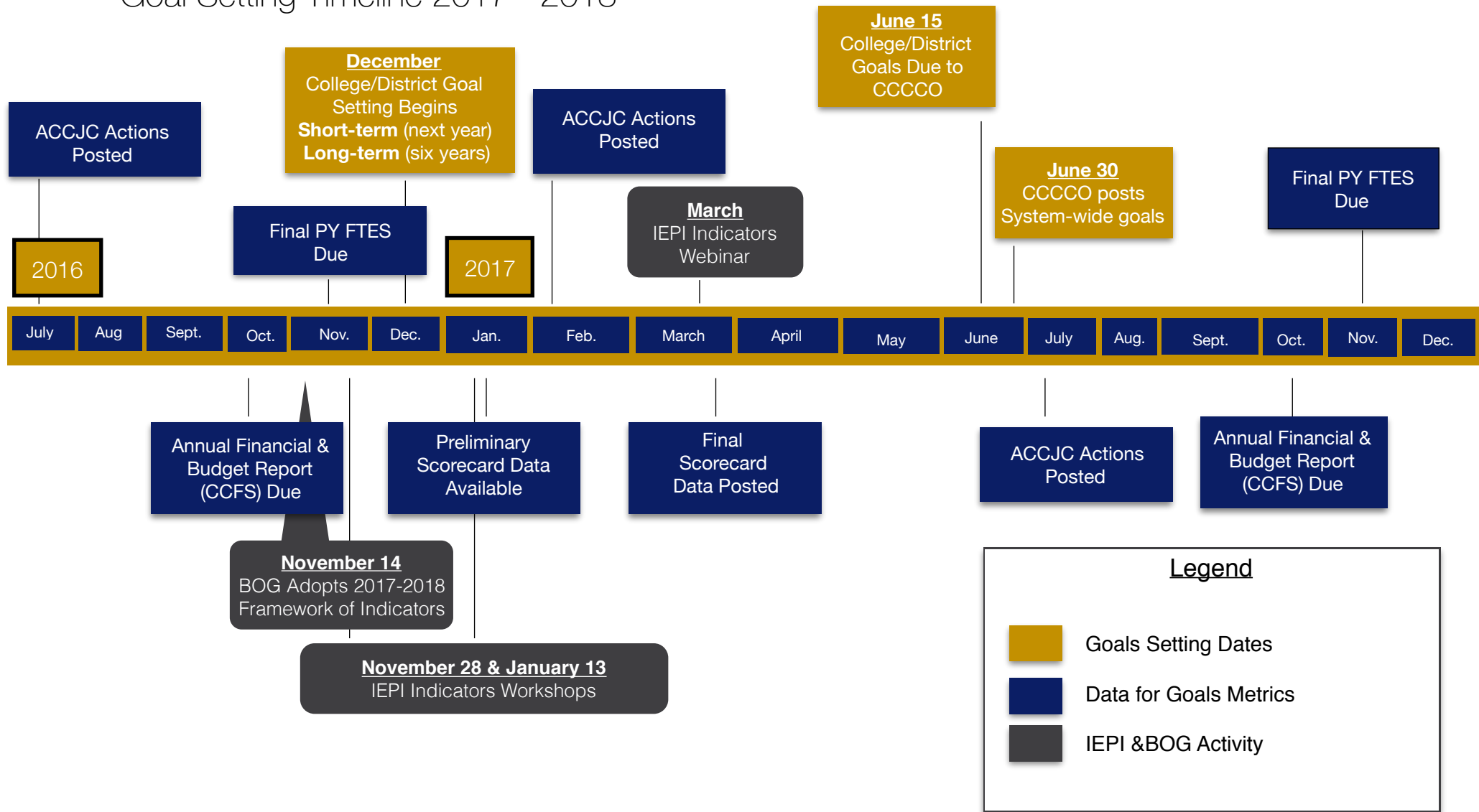
Academic Senate

Eric Thompson and Jane Saldaña-Talley, IPC Co-Chairs

*April 5, 2017*

# Institutional Effectiveness Framework of Indicators

## Goal Setting Timeline 2017 - 2018



COLLEGE/DISTRICT INDICATOR	SCJCD/SANTA ROSA JUNIOR COLLEGE		
	2015/16 Short Term (1 year)	2016/17 (Short Term/1 year; Long Term/6 year)	2017/18 (Short Term/1 year; Long Term/6 year)
<b>STUDENT PERFORMANCE AND OUTCOMES</b>			
Completion Rate			
College-Prepared	X	X	
Unprepared for College	X	44.5%/48%	
Overall	X	X	
Remedial Rate			
Math	X	X	
English	X	X	
ESL	X	X	
CTE Completion Rate	X	X	
Successful Course Completion	72.1%	72.1%/73%	
Completion of Degrees	X	X	
Completion of Certificates	X	X	
Transfer to 4-Year Institutions	X	X	
Transfer-level Math/English Completion			
Year 1			
Year 2			
Number of Low-Unit Certificates Awarded			
Median Time to Degree			
Number of Career Development and College Preparedness (CDCP) Certificates Awarded			
Non-Credit 'Fill-in-the-Blank'			
CTE Skills Builder Wage Change			
District Participate Rate 18-24 year olds			

ACCREDITATION STATUS			
Accreditation Status	Fully Accredited - No Action	Fully Accredited - No Action	
Date of Next Visit	Spring 2022	Spring 2022	
FISCAL VIABILITY			
Salary and Benefits	X	X	
Full-Time Equivalent Students	X	X	
Annual Operating Excess/(Deficiency)	X	X	
Fund Balance	5%	5%/7%	
Cash Balance	X	X	
OPEB Liability			
PROGRAMMATIC COMPLIANCE WITH STATE AND FEDERAL GUIDELINES			
Audit Findings Financial Statement	'unmodified' or 'unqualified' independent audit opinion (minimal or no material weaknesses or significant deficiencies) = Y	'unmodified' or 'unqualified' independent audit opinion (minimal or no material weaknesses or significant deficiencies) = Y/Y	
Audit Findings State Compliance		'unmodified' or 'unqualified' independent audit opinion (minimal or no material weaknesses or significant deficiencies) = Y/Y	
Audit Findings Federal Award Compliance		'unmodified' or 'unqualified' independent audit opinion (minimal or no material weaknesses or significant deficiencies) = Y/Y	
COLLEGE CHOICE			
Required College Choice: Student Achievement - See above		See above	See above
Optional College Choice - Population Participation Rate (18-64 year olds)		12.2%/12.3%	